



Building Stronger Connections with Emotional Intelligence and Empathy

Emotional intelligence is the cornerstone of effective communication, strong relationships, and professional growth. This course empowers you with the foundational principles of Emotional Intelligence and an exploration of its four core skills, with a special focus on empathy.

The programme is addressed to:

Those who want to enhance their interpersonal skills by harnessing the power of emotional intelligence and cultivating empathy to forge deeper connections

On completion of this training, you'll walk away with:

- An understanding of Emotional Intelligence
- An appreciation of how important Emotional Intelligence is in your professional and personal development
- The ability to explain the four core skills underlying Emotional Intelligence
- Insight into empathy, its role in enhancing connections, and ways to cultivate it
- Personal insights gained through self-reflection



PwC's Academy Cyprus



11 February 2026



9:00 – 13:00
(4 CPD units)



PwC Central
Building



Eleni Georgiou

People Learning Experience Team
Lead PwC's Academy

Eleni Anthimou

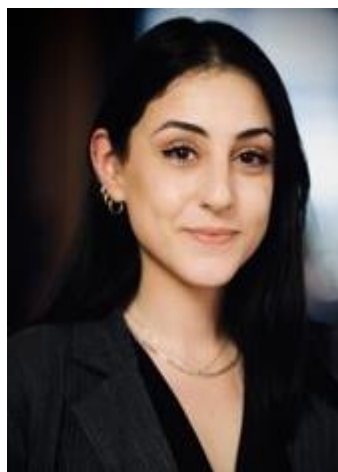
Client Learning Lead & Professional
Qualifications Program Manager
PwC's Academy



Follow [this link](#) to register

Fee: €125 (+VAT)

People Learning Experience Team Lead



Eleni Georgiou

Eleni began her career 10 years ago in the PwC Cyprus Audit team and qualified as Chartered Accountant, before changing paths and joining PwC's Academy, due to her passion for learning and sharing knowledge with others.

In her role as the People Learning Experience Lead at PwC's Academy Cyprus, her areas of expertise include the design and delivery of training utilizing learning technologies. She is an enthusiastic instructor, specializing in Business skills courses and an approved trainer by the Cyprus Human Resource Development Authority.

Making a positive impact and supporting others grow gives Eleni purpose. For this same reason she became an Accredited Coach and Mentor under the European Mentoring and Coaching Council (EMCC), mainly involved in career and leadership coaching.

Favorite Quote:

"If you're always trying to be normal you will never know how amazing you can be"

Client Learning Lead & Professional Qualifications Program Manager



Eleni Anthimou

Eleni is part of the team for the past 16 years. She holds a BSc in Political Science with a Minor in Sociology from the University of Cyprus, and an MBA from the European University of Cyprus.

She is an enthusiastic trainer, delivering seminars for personal and professional development both to clients as well as PwC personnel. Eleni has extensive experience in Learning & Development. Her areas of expertise include the design, planning, organisation and delivery of learning, business skills seminars and evaluation analysis. She is also an approved trainer from the Cyprus Human Resource Development Authority (Cy-HRDA).

Favorite Quote:

"Tell me and I forget, teach me and I may remember, involve me and I learn"