

PwC Alumni

Σχέση που αντέχει στον χρόνο

Γιώργος Μ Λοΐζου

Μέλος Εκτελεστικού Συμβουλίου PwC
Υπεύθυνος Ανάπτυξης Αγορών



PwC's Alumni network

- Social network
- Professional network
- Distinguished individuals with common background



PwC: History of the firm

Price Waterhouse
established 1952

Coopers & Lybrand
established 1970

PricewaterhouseCoopers
• merged – July 1998

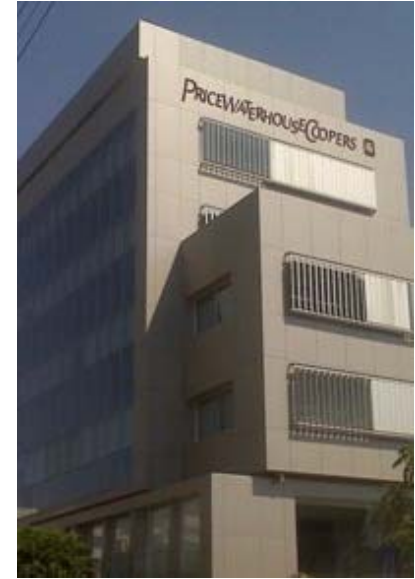
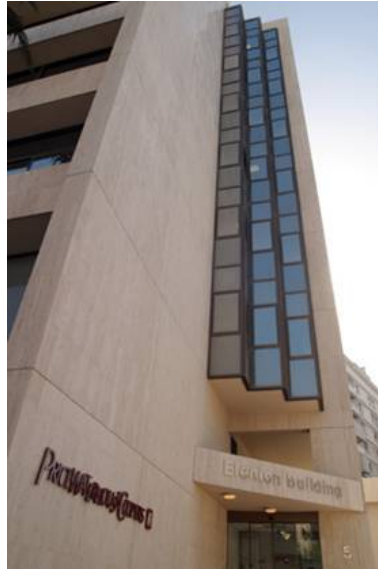
Staff

600

Who we are



- More than 146.000 people in 150 countries with more than 770 offices
- More than 950 people in Cyprus
- Offices in all major towns



Nicosia buildings

Our offices in Cyprus



Limassol



Paphos



Larnaca (now new)

PwC in Cyprus

The firm today

Numbers by Town

	Partners	Directors	Staff	Total
Nicosia	30	9	566	669
Limassol	8	-	163	172
Larnaca	4	2	55	61
Paphos	2	1	58	61
	44	12	842	963

PwC in Cyprus

The firm today

Numbers by Service Line

	Partners & Staff
Assurance	248
Advisory	53
GCS	228
Tax	99
CSS	32
IFS	164
2008 trainees	139
Total	963



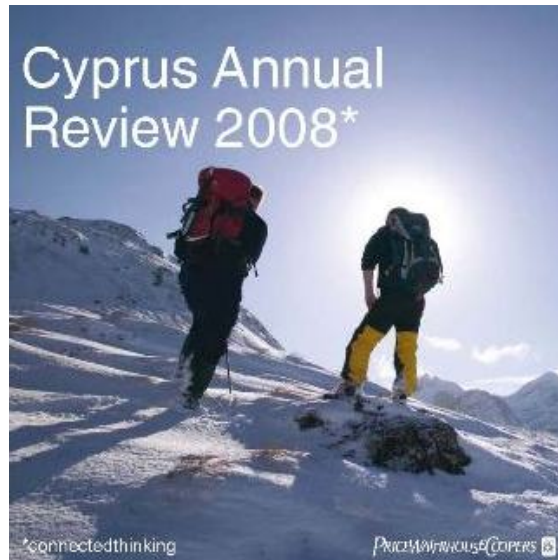
Executive Board

- Phidias Pilides – CEO
- Dinos Papadopoulos
- Panikos Tsiailis
- Christakis Santis
- Stephos Stephanides
- Costas Mavrocordatos
- Vassilis Hadjivassiliou
- George Loizou
- Pantelis Evangelou
- Evgenios Evgeniou
- Philippos Soseilos

Cyprus Annual Review 2008



2008 – A good year for our firm in Cyprus



- Assurance Services – 18%
- Advisory Services – 29%
- Tax Services – 36%
- Global Compliance Services – 30%
- Corporate Support Services (including legal) – 107%

5-year Strategy

Continue sustainable growth with

- Quality people
- Quality clients
- Quality services

Through a high performance culture

* Succession

Quality

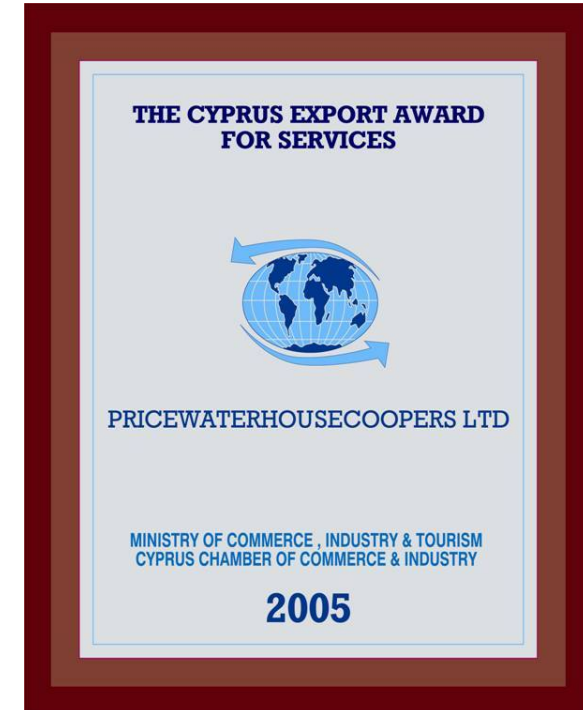
Quality stands at the centre of our growth strategy



European CEO:
Best Tax Team of the year 2008



International Tax Review:
2008 Tax Firm of the year



2005 Cyprus Export
Award for Services

Our Community



Corporate responsibility is about creating the right culture for our business – one in which we not only understand our impacts, but are motivated to manage them effectively

Our Community



Our commitment to the PwC Alumni network

To develop and enhance the network by providing continuous support to its members and sharing cutting edge experiences



Thank you

